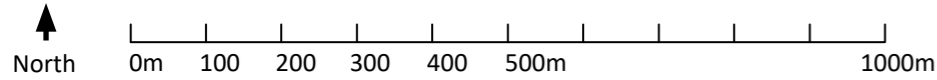
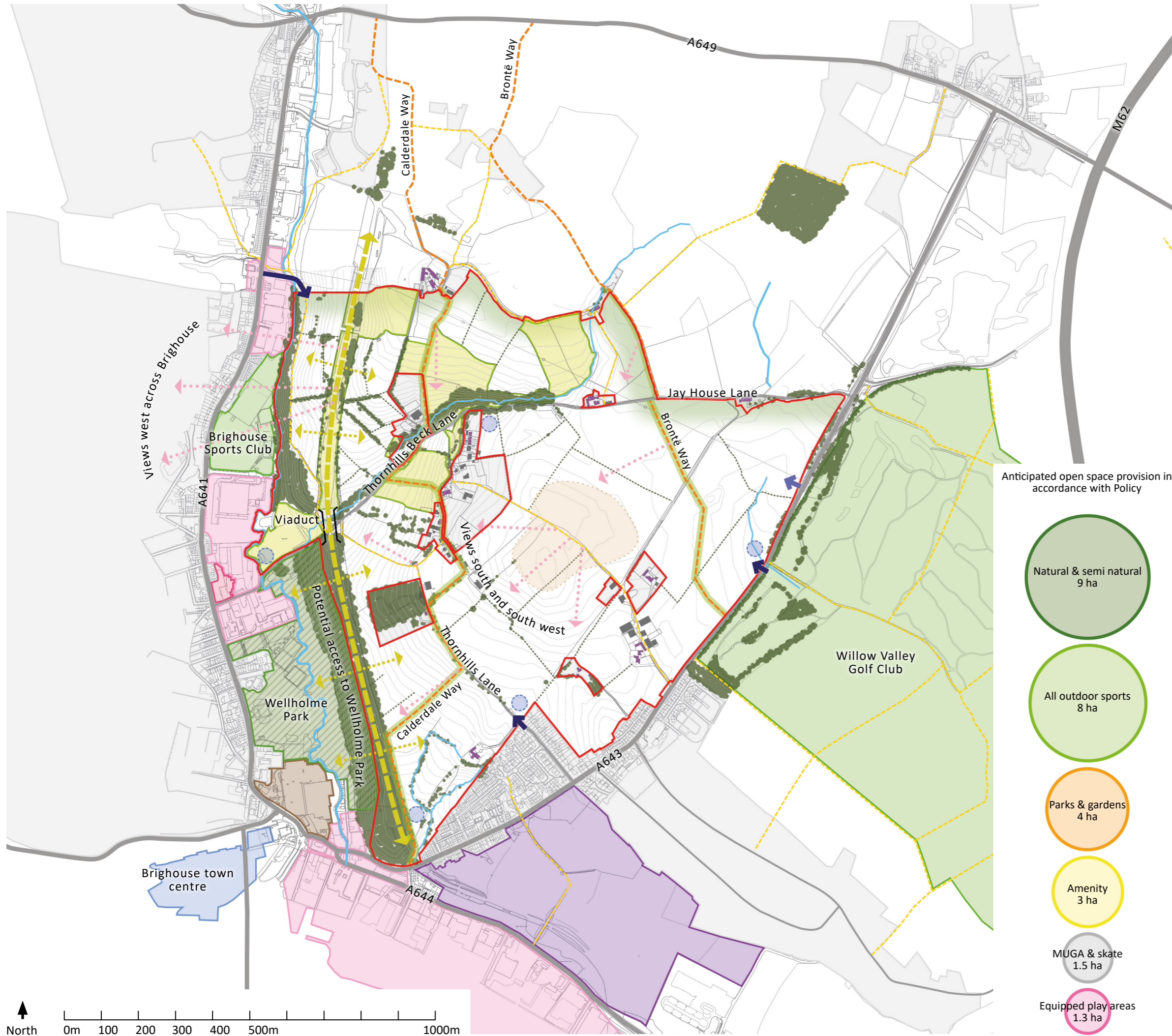
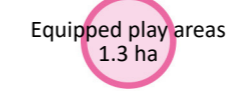
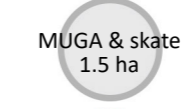


**KEY:**

-  Application boundary: Garden Suburb ref LP1463 (emerging Local Plan Policy SD7)
-  Existing woodland and vegetation
-  Existing Public Rights of Way (PRow)
-  Long distance public footpaths: Brontë Way and Calderdale Way
-  Existing water courses
-  Historic field boundary
-  Calderdale Wildlife Habitat Network
-  Urban area / residential settlement
-  Existing building of character
-  Wellholme Park
-  Existing outdoor sports facility
-  Tesco superstore
-  New employment site (emerging Local Plan Policy SD5)
-  New mixed use site (emerging Local Plan Policy SD6)
-  Primary employment area (emerging Local Plan Policy EE1)
-  Primary shopping area (emerging Local Plan Policy RT2)
-  Potential to enhance north / south connection along dismantled railway line and create new pedestrian and cycleconnections east and west
-  Area of high and relatively flat ground: potential for POS / minimal development
-  Potential to retain some long range views from within site
-  Potential primary site access point
-  Potential SuDS attenuation area
-  Potential landscape buffer to Green Belt edge

Anticipated open space provision in accordance with Policy



**Thornhills Garden Suburb**

**Assets and Opportunities Plan**

Drwg No: 776A-05A  
 Drawn by: SB  
 Rev by: SB (18.01.21)  
 QM Status: Checked  
 Scale: 1: 10,000 @ A3

Date: 11.06.2020  
 Checker: DL  
 Rev checker: DL  
 Product Status: Issue